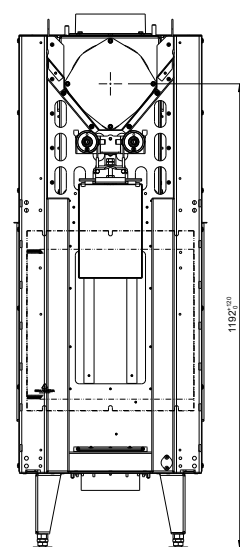
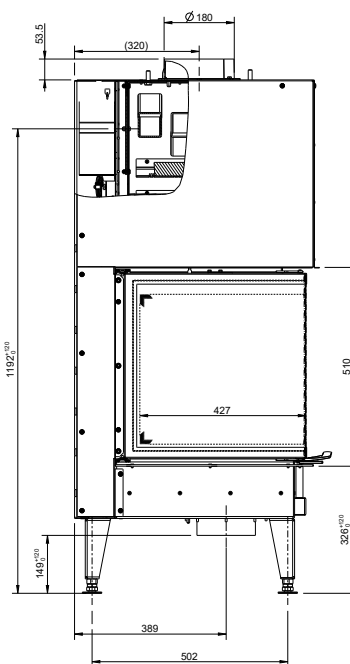
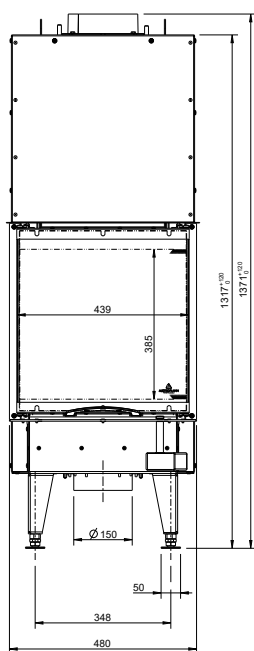
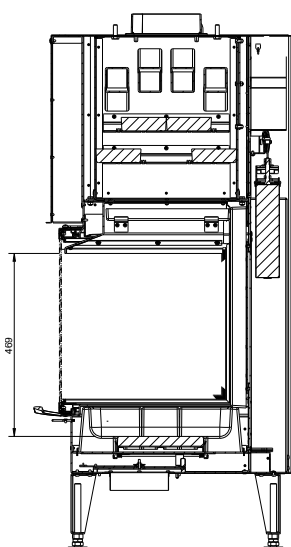


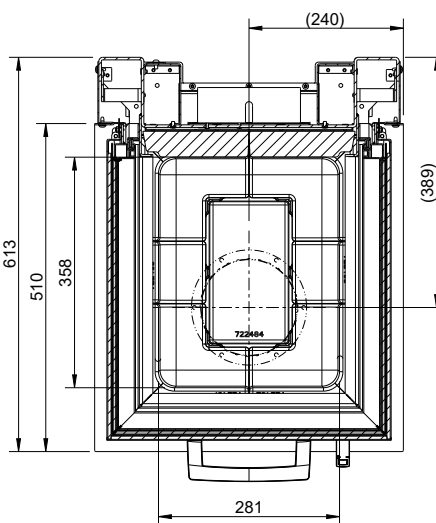
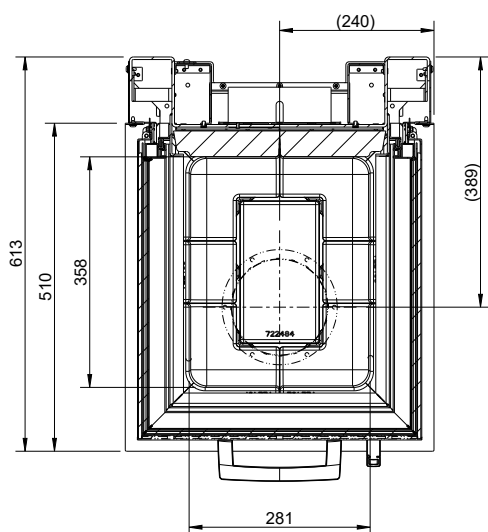
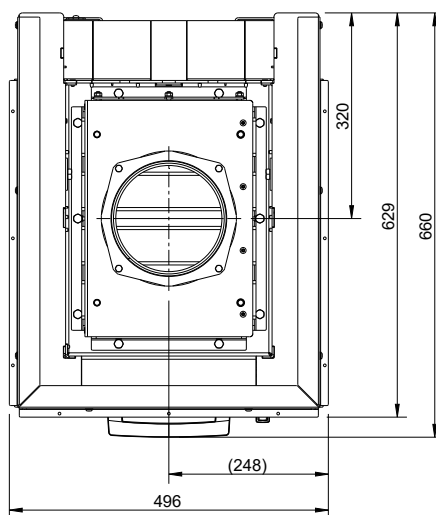
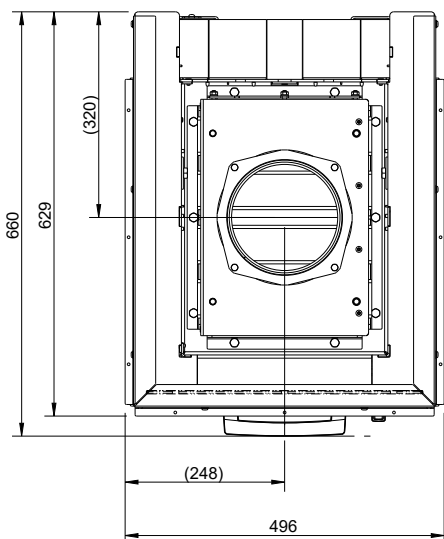
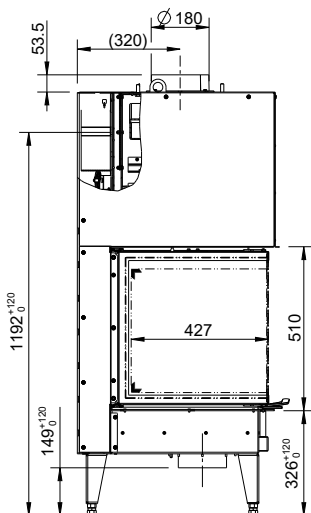
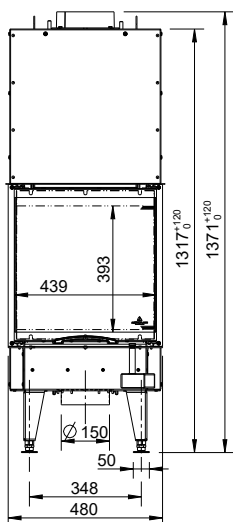
48X51X51-S3



AUSTROFLAMM



48X51X51-S3



- not available

Dimensions and weight	
Height from [mm]	1371
Height to [mm]	1491
Width (body installation dimension) [mm]	496
Depth [mm]	629
Door frame height [mm]	510
Door frame width [mm]	480
Weight, basic appliance [kg]	191
Weight, HMS [kg]	-
Combustion chamber height [mm]	554
Combustion chamber width [mm]	281
Combustion chamber depth [mm]	358
Flue pipe outlet, diameter [mm]	180
Minimum distance to combustible materials - distance to rear dR [mm]	0/ 0
Minimum distance to combustible materials - left side dS_1 [mm]	800/800
Minimum distance to combustible materials - right side dS_2 [mm]	800/ 800
Minimum distance to adjacent combustible materials (e.g. furniture) dP [mm]	1000/ 1000
Minimum distance to combustible materials - floor in front dF [mm]	0/ 0
Minimum distance to combustible materials - bottom dB [mm]	165/ 165
Minimum distance to combustible materials - left side radiation area dL_1 [mm]	0/ 0
Minimum distance to combustible materials - right side radiation area dL_2 [mm]	0/ 0
Minimum distance to combustible materials - distance to ceiling dC [mm]	750/ 750
Safety distance to insulation, ceiling [mm]	220/ 220
Safety distance to insulation, left [mm]	-/-
Safety distance to insulation, rear [mm]	60/60
Safety distance to insulation, right [mm]	-/-
Safety distance to insulation, floor [mm]	-/-
Insulation material thickness to installation base [mm]	0/ 0
Insulation material thickness to ceiling [mm]	120/120
Minimum distance from non-flammable materials [mm]	50/50
Insulation material, left [mm]	-/-
Insulation material thickness, right [mm]	-/-
Insulation material, rear [mm]	60/ 60
Cross-section, convection outlet [cm ²]	710/ 710
Cross-section, convection inlet [cm ²]	718/ 718
Max. amount of firewood fuel to be deposited [kg]	2.3/2.3
Output	
Nominal heat efficiency [kW]	10.0/10.0
Minimum heat output [kW]	-/-
Maximum heat output [kW]	10.0/10.0
Energy efficiency class	A+/A
Circulating air cross-section with metal heat recovery surface [cm ²]	710/710
Circulating air cross-section without metal heat recovery surface [cm ²]	710/ 710
Combustion air requirement [m ³ /h]	38.40/38.40
Minimum fuel throughput [kg/h]	-/-
Maximum fuel throughput [kg/h]	3.0/3.0
Outside air connection diameter [Ø mm]	150
Equipment	
Hinged door	No
Sliding door	Yes
Double pane	No
Pane curvature	Flat
Opening mechanism	Slide

- not available

Equipment

Balanced flue - DiBt (German Institute for Structural Engineering)

-

Heat Memory System

Accessories

Hypocaust in compliance with technical regulations

Yes

Data for the chimney sweep

Flue gas mass flow at nominal heat output [g/s]

12.0/ 12.0

Flue gas temperature [°C]

231/231

Minimum delivery pressure at nominal heat output [Pa]

12/12